

2002
CARDINAL
by Forest River



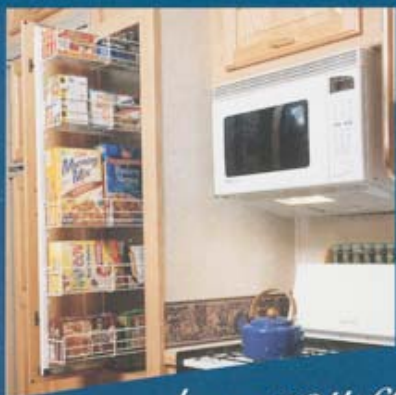
renew
your *Spirit*



The magnificence of the great outdoors is the inspiration behind Cardinal fifth wheels. Taking its cue from the awesome beauty of nature, Cardinal is exquisitely crafted and grandly appointed. As you enjoy the awe-inspiring sights outside your RV door, you can also revel in the luxurious ambience of your Cardinal home. There's no better way to celebrate the joys of the RV lifestyle than with the stately quality and beauty of a Cardinal.

Explore a world of beauty and splendor

Built into every Cardinal is a collection of aesthetic details, ingenious features, and a generous helping of luxury. The interior is a wonderful blend of timeless styling and modern day convenience replete with a liberal amount of living space.



The well-equipped kitchen has all the appointments and appliances you desire. The microwave is conveniently placed within easy reach, and the slide-out pantry features handy, adjustable shelves.

Distinctive oak detailing, fine fabrics, and fashionable window treatments are examples of the numerous elegant touches that enhance the interior atmosphere.

A place where you can renew your spirit.





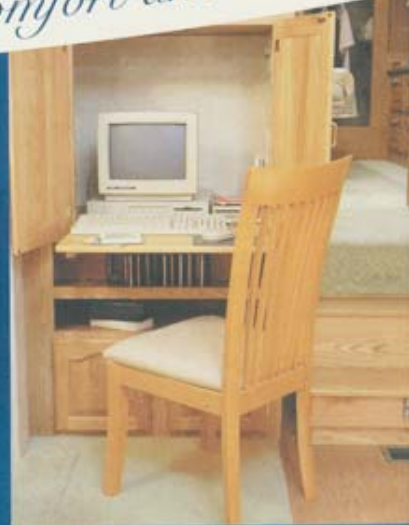
The spacious living area surrounds you in a homey atmosphere of relaxing contentment.

Enter a world of comfort and luxury.

The freestanding dinette features residential high back chairs and a table extension to accommodate guests.



Cardinal is handcrafted for easy living. Practical utility and functionality are engineered into each floorplan. Every feature and component is carefully placed to maximize space and function, yet presented with the highest level of aesthetic appeal.



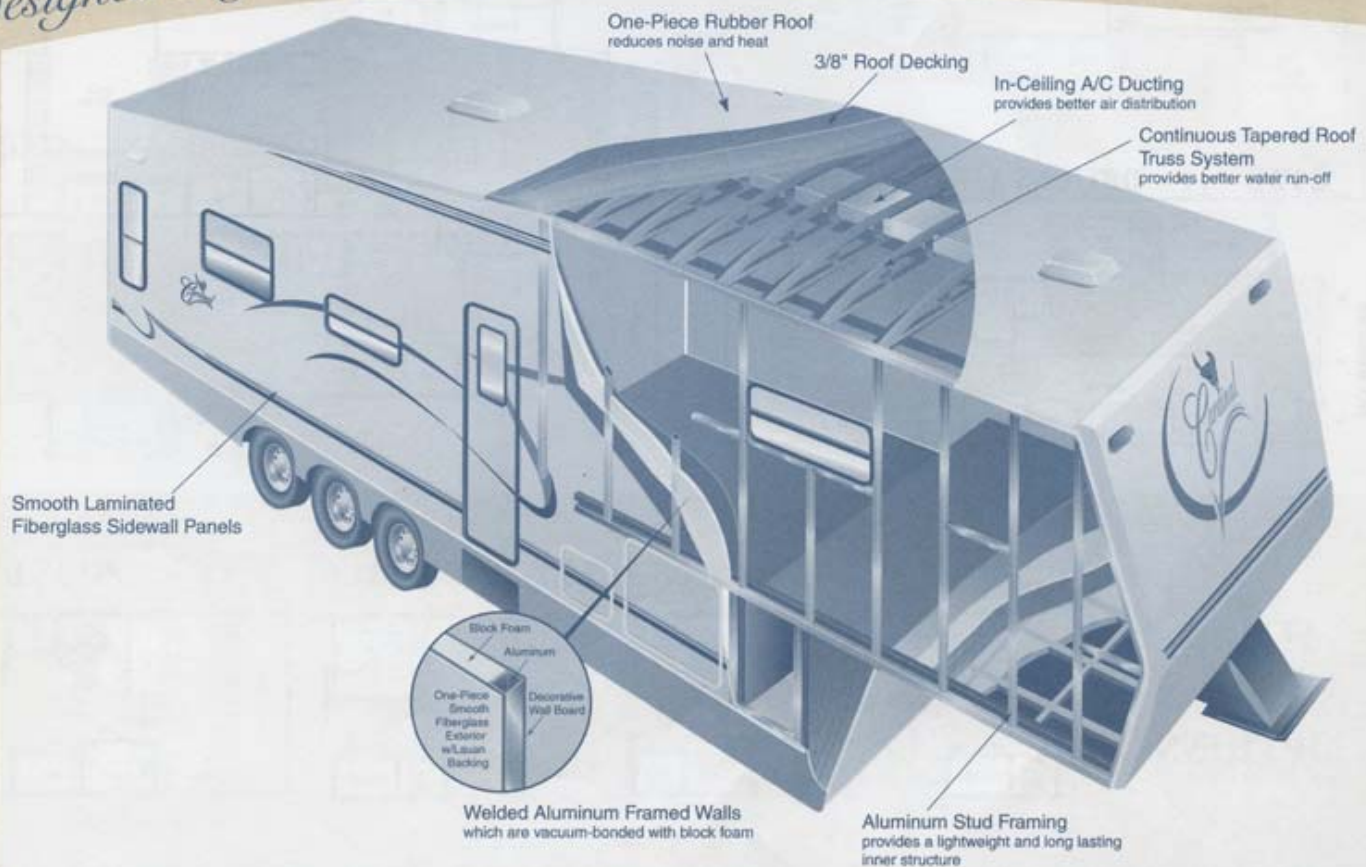
A desk for your favorite computer or just writing letters the old fashioned way is built into the entertainment center and concealed behind handsome cabinet doors. Be sure to note the revolutionary flat floor that extends the entire way from the bathroom through the bedroom. A Cardinal first.

True quality goes beyond appearances. It originates from a good foundation of premium grade building materials, solid construction methods, and the expertise of skilled craftsmen. To enhance the long-term value of your unit, we use the same construction techniques used for high-end motorhomes. We begin with welded aluminum framed walls that are vacuum bonded for added strength. The interior walls, exterior fiberglass, and everything in between are then glued and bonded to become one solid piece, creating an exceptionally durable unit.



- 5/8" tongue and groove plywood flooring glued and screwed to 2" x 3" floor studs
- Slide-out rooms laminated with aluminum framing all the way around
- More clothes hanging space than any competitor in a comparable size
- 1 piece fiberglass showers or bathtubs
- Glass shower doors most models
- Cabinets that are screwed together (not stapled)
- Metal "house type" side drawer guides are used on our abundance of drawers – even one large one in the kitchen for pots and pans (most models)
- Top of the line furniture, including a standard hide-a-bed sofa, is used for long term enjoyment
- 30 oz. carpeting and residential linoleum are used in covering the floors
- Solid oak edging is used on all countertops
- Laminated bath floors mean no soft spots and uninterrupted extra large storage on the exterior
- Snap in ceiling trim means no exposed staples to show
- Microwave located at lower height for convenience

Designed to give you years of enjoyment.





28WB **OPTIONS A, B, C**



29TS **OPTIONS B, E**



29WB **OPTIONS A, B, C**



31-2BH **OPTION B**



31TS **OPTION D**



32CKT **OPTION D**



FLOOR PLAN OPTIONS

OPTION A



OPTION B



OPTION C



OPTION D



33CKT OPTION F



35CKT OPTION D



36RLE OPTIONS D, EC



33RLBW OPTION D



38RLTB OPTIONS D, EC



33TS OPTION D



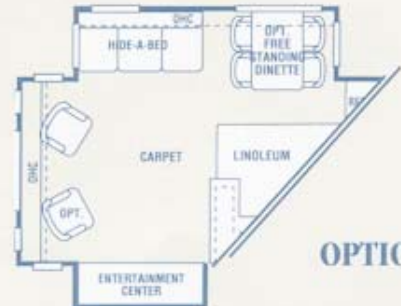
OPTION E



OPTION F



OPTION EC



STANDARD FEATURES

- Booth dinette
- Hydraulic slide-out flush floor
- Welded aluminum frame laminated side wall 2"
- High gloss fiberglass exterior
- Block foam insulation
- 5" truss rafters
- Rubber roof
- Carpeted, heated & lighted storage compartments
- Solid oak cabinet doors (cathedral raised panel)
- Deluxe awning
- Porcelain stool
- 13.5 BTU ducted A/C w/Quick Cool
- Microwave - 22" OTR
- 6 gal. gas/electric DSI water heater
- Swivel rocker
- Ceiling fan
- Roof ladder
- Phone jack
- Double door refer. (6')
- TV antenna w/booster
- 2nd TV outlet & shelf-bedroom
- Cable TV hook-up
- Mini blinds
- Water heater bypass
- Cosmetic light
- LP leak detector
- 3 burner Hi-output range with 22" oven
- Monitor panel
- Floor insulation R-11
- Double insulation in roof R-14
- Innerspring mattress w/bedspread
- Bed lifter
- Clamp ring windows
- Dark tinted windows
- Large acrylic kitchen sink
- Upgraded drawer glides
- Directional reading lights - bedroom & living room
- Extra large bath sink
- Interior/exterior grab handles
- Cedar lined closets
- Oak edged counter tops
- Knife rack & spice holder
- Clock
- Queen bed 60x80 (bed slides)
- Radius entry door
- Sink cover
- Hide-a-bed sofa
- Shock absorbers
- Dinette booth
- 52 gal. fresh water
- AM/FM stereo w/cassette & CD
- Glass shower door*
- 15" tires & wheels
- 5/8" tongue and groove plywood floor (screwed)
- 3/8" roof decking (screwed)
- Black tank flush
- Extended entry step (triple)
- Large end wall windows in slideout w/slider window
- Shelves in kitchen overhead cabinet
- 120 gallon waste tanks
- Vinyl floor in toilet area
- 35M BTU furnace
- Easy lube axle
- Overhead cabinet in main slide-out room
- Pass through storage N/A 31-2BH
- Electric FW front jacks
- Stabilizer jacks
- Pull out pantry - most models
- Water purifier

*Standard on most models

POPULAR OPTIONS

- 2nd swivel rocker
- Recliners
- Dinette & 4 chairs
- Dinette chair (for computer desk)
- 8' refer
- 8' refer with ice maker (N/A in refer slides)
- 10' refer
- 10' refer with ice maker(N/A in refer slides)
- 12' side/side refer with ice maker (w/flat panel 33TS, 35CKT, 36RLE, 38RLTB only)
- Heated and enclosed holding tanks
- TV-25"
- 6+2 sound system
- 15K BTU A/C IPO
- Geny prep (hr. meter, start switch, transfer box only)
- 3.6 Onan micro quiet generator (LP only)
- 15" spare tire
- 16" tires (16" required: all triple slides exc. 36RLE, 38RLTB)
- 16" spare
- 16" alum. wheels
- Coffee maker
- Battery
- Security lights
- Combo washer/dryer (W/50 amp svc)
- Stack washer/dryer (W/50 amp svc)
- Stack washer/dryer closet w/removable drawers
- Elite oak (dark)
- 9000 A&E awning
- Fireplace
- Front cap
- Hide-a-bed w/footrest (n/a 28WB)
- Aurora china toilet
- Wire & frame for 2nd A/C
- 2nd A/C (13.5) in bedroom
- Center awning support
- End table
- Coffee table
- Safety glass
- Thermo-Pane windows
- 2nd furnace(20K BTU) (34' & larger)
- Satellite prep (RG6) - roof or side mount
- 12V battery disconnect
- Gel coat fiberglass
- Fantastic fan w/rain sensor
- Central vacuum system
- Option EC - (36RLE, 38RLTB)
- Selector switch for slide-outs
- Tub w/folding shower door IPO (non-glass door)
- Vinyl floor in entire bathroom
- Garden tub IPO neo-angle shower
- Aluminum roof truss
- Slide-out awnings
- Storage pod
- Roof rack
- Upgraded vinyl

LX Package

- Front & rear caps*
- Ext. hand rail*
- Day/ Nite shades*
- 10 gal. gas/elec. water heater DSI*
- Oak refer panel*
- Bath sky dome*
- Plank floor*
- Range cover*
- Slide out oak trim pkg. & oak step into bath*
- Upgrade vinyl IPO plank floor (in LX pkg.)

SPECIFICATIONS

| Models: | 28WB | 29TS | 29WB | 312BH | 31TS | 32CKT | 35CKT | 33RLBW | 33TS | 35CKT | 36RLE | 38RLTB |
|--|-----------------|-----------------|-----------------|-----------------|-----------------|-----------------|-----------------|-----------------|-----------------|-----------------|-----------------|-----------------|
| UVW - Approx. Unloaded Vehicle Weight | 8,840 | 9,650 | 9,110 | 9,830 | 10,760 | 10,260 | 10,600 | 9,400 | 10,500 | 10,840 | 10,900 | 11,470 |
| Approx. Hitch Weight (lbs.) | 2,090 | 2,080 | 2,070 | 2,040 | 1,740 | 2,140 | 2,180 | 1,780 | 2,110 | 2,120 | 2,080 | 2,100 |
| GAWR - Gross Axle Weight Rating | 10,400 | 10,400 | 10,400 | 10,400 | 10,400 | 12,000 | 12,000 | 10,400 | 12,000 | 12,000 | 15,600 | 15,600 |
| GVWR - Approx. Gross Vehicle Weight Rating | 12,490 | 12,480 | 12,410 | 12,440 | 12,100 | 14,140 | 14,180 | 12,180 | 14,110 | 14,120 | 15,000 | 15,000 |
| NCC - Approx. Net Carrying Capacity | 3,650 | 2,830 | 3,360 | 2,610 | 1,540 | 3,880 | 3,580 | 2,780 | 3,610 | 3,280 | 4,100 | 3,530 |
| Exterior Length | 30' 4" | 31' 9" | 31' 5" | 33' 4" | 33' 11" | 34' 5" | 35' 6" | 34' 7" | 35' 5" | 37' 3" | 37' 11" | 39' 10" |
| Exterior Overall Height w/AC | 12' | 12' | 12' | 12' | 12' | 12' | 12' | 12' | 12' | 12' | 12' | 12' |
| Interior Height - Bedroom | 76" | 76" | 76" | 76" | 76" | 76" | 76" | 76" | 76" | 76" | 76" | 76" |
| Brake Size | 12 | 12 | 12 | 12 | 12 | 12 | 12 | 12 | 12 | 12 | 12 | 12 |
| Tire Size | ST225/ 75R15 | ST225/ 75R15 | ST225/ 75R15 | ST225/ 75R15 | ST225/ 75R15 | LT235/ 85R16 | LT235/ 85R16 | ST225/ 75R15 | LT235/ 85R16 | LT235/ 85R16 | ST225/ 75R15 | ST225/ 75R15 |
| Fresh Water (gallons) | 52 | 52 | 52 | 52 | 52 | 52 | 52 | 52 | 52 | 52 | 52 | 52 |
| Waste Water Holding Tanks (gallons) 3@40 Gal. Ea. | 120 | 120 | 120 | 120 | 120 | 120 | 120 | 120 | 120 | 120 | 120 | 120 |

*Dry weight estimates include A/C, awning, microwave, hide-a-bed and swivel rocker.
Model number of any particular unit does not necessarily reflect the overall length of the unit itself.



Designed to give you years of enjoyment.

Storing your personal items poses no problem in the spacious, storage-conscious bedroom where there's a place for everything.

The bathroom features extra vertical space in the shower for more headroom and a residential-style porcelain stool.



The Cardinal bedroom transports you to a peaceful place where you'll be pampered in comfort. There's an



amazing amount of storage space for your personal things including a larger size wardrobe

to provide more hanging space for clothes. You'll find the bath area just as comforting with plenty of walk-around space and home-like fixtures.



Unlike the awkward bi-fold doors found in other RVs, house-like wood sliding doors provide privacy in the bed and bath area.



This rear living room model features an efficient L-shaped kitchen.

Ingenious storage solutions and feature enhancements distinguish Cardinal from the ordinary. You won't find any "dead" space in our fifth wheels. Every inch of space is fully utilized to increase the function and livability of your unit.



Cardinal's living room cabinets are much deeper than most other RV's.



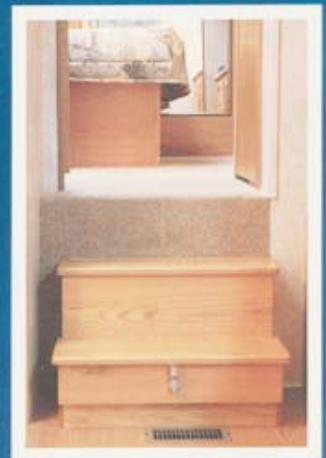
We place two Roof Attic Vents on every unit to provide an escape route for unwanted moisture accumulation with extended use.



Cardinal Quality

The RV life is about freedom. That's why Cardinal offers the freedom of choosing from many different floorplans, models, options, and decors. It ensures that the unit you select is uniquely suited to your needs and desires. The indelible result is a more satisfying RV home that serves you well for many rewarding years of pleasurable travel.

The steps leading to the bath and bedroom areas lift up to reveal a hidden storage compartment. Your attention is also invited to the flat floor that extends from the bathroom through the bedroom. No more stepping up and "ducking" your head when you step into our bedrooms. They have a 76" headroom throughout the bath/bedroom area. A Cardinal First.



Although after awhile you'll take them for granted, well-conceived design features abound throughout the interior. For example, designing the bedroom and bathroom on the same level eliminates extra steps and creates more efficient space.

Come home to quality features.



An in-floor laundry chute and basket cleverly conceals soiled laundry underneath the floor.



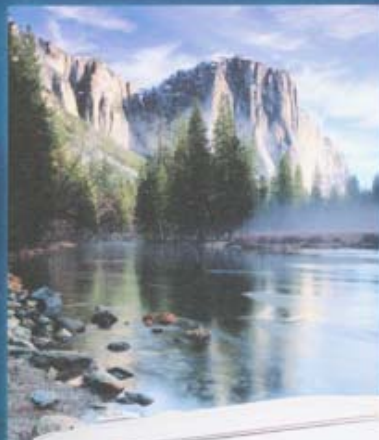
A lockable storage compartment is secreted inside the bedroom wardrobe and provides a secure place for valuables.



An enormous exterior pass-through storage area easily accommodates large items and extra gear. Netting keeps items safely secured while traveling.



The removable shore station external power cord provides greater hook-up convenience.



Cardinal 2002



The Two Forests of Forest River... Forming Relationships with Nature

Forest River, Inc. is helping to preserve America's wilderness areas for the use and enjoyment of our customers and future generations. With every Forest River recreational vehicle purchased, a tree will be planted in the buyer's name in one of America's national forests.



Printed on Recycled Paper

Forest River
Cares

Dealer

FOREST RIVER, INC.

58277 SR 19 South • Elkhart, IN 46517

Phone: (219) 296-7700 • Fax: (219) 295-1524

www.forestriverinc.com



All illustrations and specifications contained in this literature are based on the latest product information at the time of publication. Forest River, Inc. reserves the right to make changes in prices, colors, materials, equipment and specifications at any time without notice and assumes no responsibility for any error in this literature. All units are shipped F.O.B. Goshen, Indiana. • CONSULT YOUR LOCAL DEALER FOR WARRANTY INFORMATION

2002



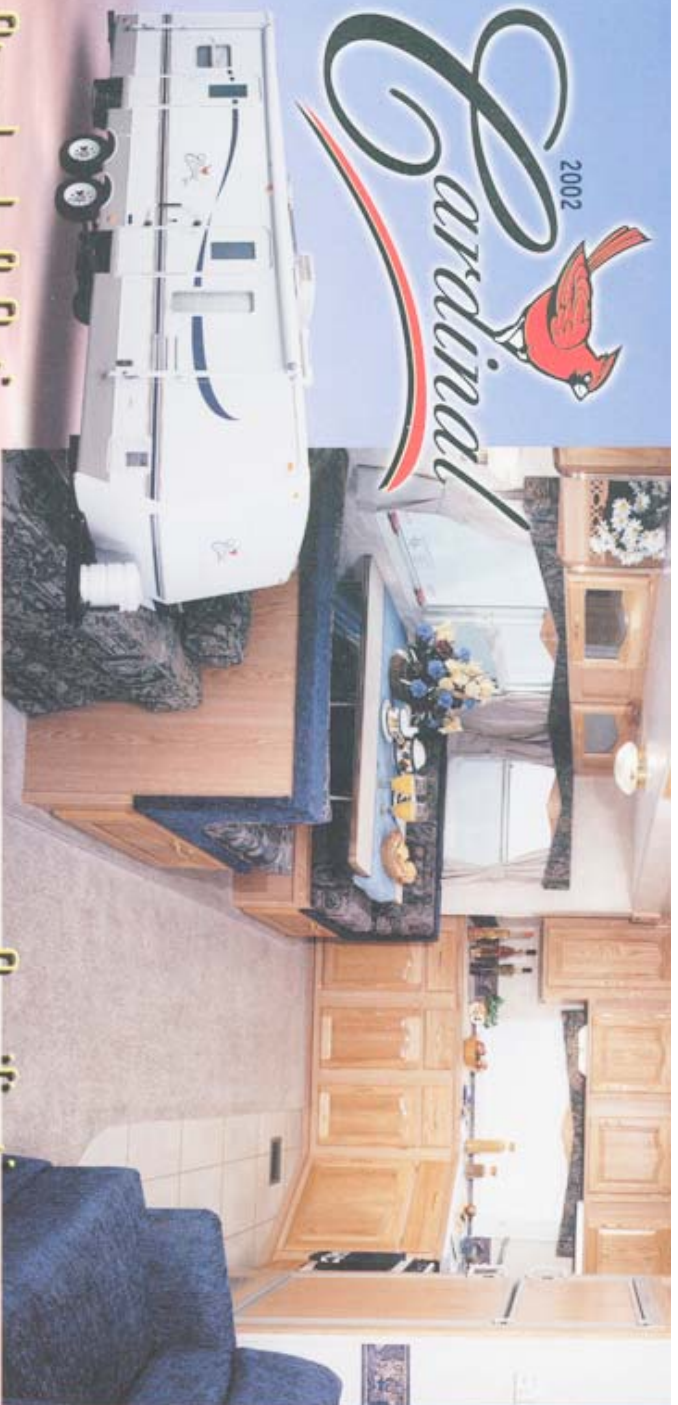
Cardinal

by Forest River



Travel Trailers

2002 Cardinal



Standards & Options

- | | |
|--|--|
| Standards | Options |
| Swivel rocker (N/A on 31BH) | TV antenna and booster |
| Hide-a-bed sofa | Double door refer |
| Mini blinds | Hi-output range — 22" |
| 13,500 A/C with quick cool | Oak edge kitchen countertop |
| Awning | Foot pedal toilet |
| Microwave | LP bottle cover |
| Front fiberglass cap | 30,000 BTU furnace |
| Booth dinette | Extra wide 30" entry door |
| 15" tires and wheels | Queen bed with bedspread and pillows |
| ABS shower with ABS surround | Super storage under bed |
| Glass shower door | Front stone guard awning |
| Cassette with CD stereo | Radius roof edges |
| Water heater bypass | Welded aluminum framed roof and floor |
| 6 gallon gas/electric DSI water heater | Aluminum framed vacuum bonded fiberglass walls |
| Phone jack | |
| Cable hook up | |

Dealer

F-65-555

Specifications

| Specs | 30FK | 31BH | 32FK | 32RL | 33RLB |
|--------------------|--------|-------|-------|--------|-------|
| Dry Weight* | 6990 | N/A | N/A | 7150 | N/A |
| Hitch Weight | 920 | N/A | N/A | 990 | N/A |
| Exterior Length | 31' 1" | N/A | N/A | 33' 0" | N/A |
| Interior Height | 78" | 78" | 78" | 78" | 78" |
| Fresh Water Tank | 41 | 41 | 41 | 41 | 41 |
| Gray Water Tanks-2 | 30/30 | 30/30 | 30/30 | 30/30 | 30/30 |
| Black Water Tank | 30 | 30 | 30 | 30 | 30 |

* Dry Weight estimates include air conditioner, awning, microwave oven, hide-a-bed and swivel rocker.



FOREST RIVER, INC.
58277 SR 19S • Elkhart, IN 46517
Phone: 574-296-7700
Fax: 574-295-1524
www.forestriverinc.com

All illustrations and specifications contained in this literature are based on the latest product information at the time of publication. Forest River, Inc. reserves the right to make changes in prices, colors, materials, equipment and specifications at any time without notice and assumes no responsibility for any error in this literature. All units are shipped F.O.B. Elkhart, Indiana. • CONSULT YOUR LOCAL DEALER FOR WARRANTY INFORMATION

Floor Plans



Model number of any particular unit does not necessarily reflect the overall length of the unit itself.

The Two Forests of Forest River... Forming Relationships with Nature

Forest River, Inc. is helping to preserve America's wilderness areas for the use and enjoyment of our customers and future generations. With every Forest River recreational vehicle purchased, a tree will be planted in the buyer's name in one of America's national forests.



Printed on Recycled Paper
Forest River Cares
Image Litho U.S.A.

© 2002 Forest River, Inc.